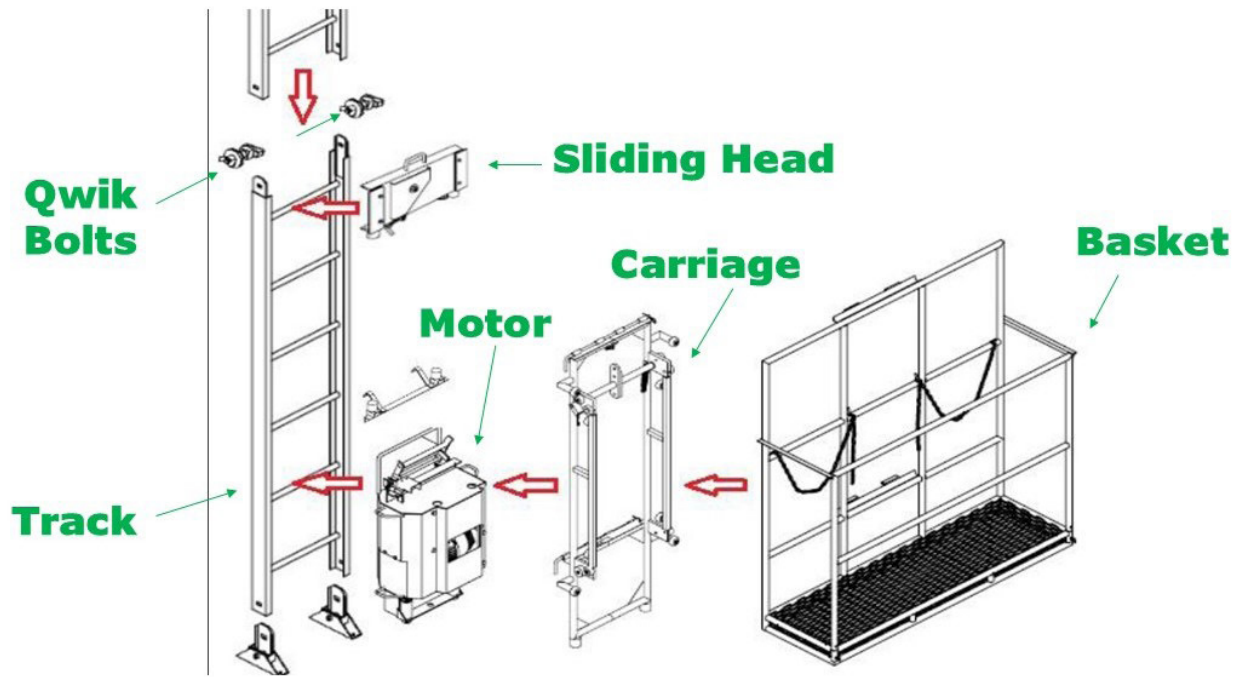


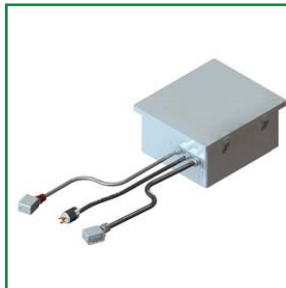
MAXIAL TRACK HOIST



MOTOR/CONTROL UNIT



MAXIAL HOIST MOTOR
(80-25-1) 110V
(80-25-4) 220V
Lifting Capacity: 450 lb
Lifting Height: 325 ft
(3/16" GAC)



MAXIAL CONTROLLER
(30-40-5) 110V
(30-40-6) 220V



MAXIAL PENDANT
(50-36)

BASKETS



**MAXIAL SYSTEM BASKET
(100-5)**



**MAXIAL FRAME SCAFFOLD
CARRIER (100-2)**



**MAXIAL UNIVERSAL
PLATFORM (100-3)**



**MAXIAL INSULATION
BASKET (100-6)**

TRACK SECTIONS & HARDWARE



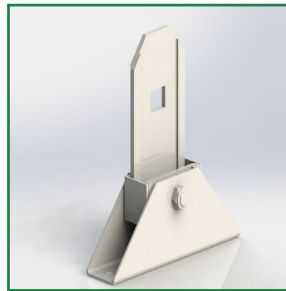
**9'-9" TRACK SECTION
(90-2)**



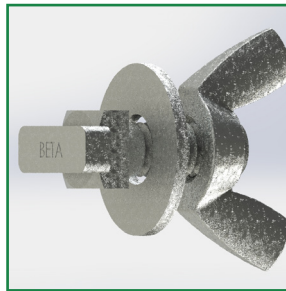
**6'-6" TRACK SECTION
(90-1)**



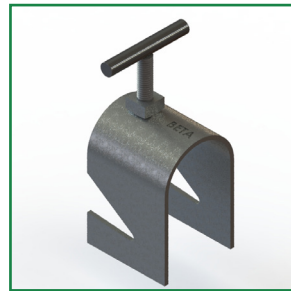
**3'-3" TRACK SECTION
(90-5)**



**MAXIAL BASE FEET
(80-1)**

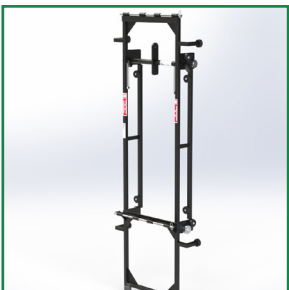


**MAXIAL KWIK BOLT
(90-6)**



**MAXIAL SCAFFOLD CLAMP
(90-4)**

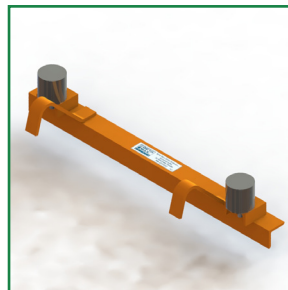
TRACK COMPONENTS



**MAXIAL UNIVERSAL
CARRIAGE
(200-1)**



**MAXIAL STANDARD
SLIDING HEAD
(80-2)**



**MAXIAL BOTTOM STOP
(80-4)**



**MAXIAL TOP STOP
(80-8)**